



Reese Tracks

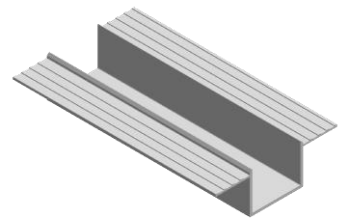
REESE 1 SERIES DATASHEET

Solutions to recess curtain tracks for clean lines

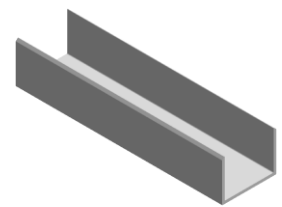
Reese is a recessed curtain track solution that is built into the ceiling during construction. Curtain tracks systems from companies such as Lutron, Somfy and Silent Gliss can be fitted inside the Reese track when construction work is completed.

When installed, curtains hang below the track close to the finished ceiling. Tracks and end sets can be emulsion painted to perfectly match the ceiling.

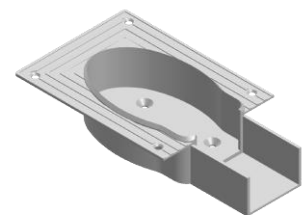
- ✓ Minimalistic design to recess curtain tracks
- ✓ End sets tailored to different manufacturers
- ✓ Option to install with or without skim coat flanges
- ✓ Tracks can be bent for curved applications.
- ✓ Supplied in 6m lengths or cut to specific size
- ✓ White as standard



Reese w Flange RT1F

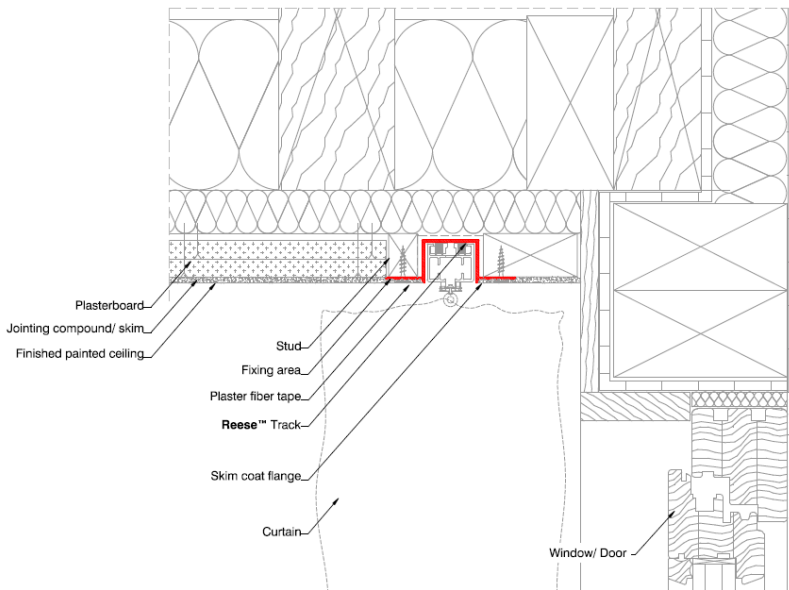


Reese Bendable RT1E

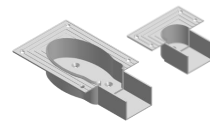


Drive-end for Somfy

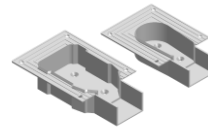
Sample installation



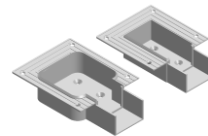
End sets



SMB1F & SRB1F
For system from Somfy



LMB1F & LRB1F
For system from Lutron



SGMB1F & SGRB1F
For system from Silent Gliss

Specification details

Manufacturer	Blindspace Web: www.blindspace.com Email: info@blindspace.com Tel: +44 20 8798 3945	
Description	Recessed profiles to house curtain tracks, drives and belt returns.	
Benefits	<ul style="list-style-type: none"> • Pre-cut to length or lengths for cutting at site • End sets for manufacturers such as Lutron, Somfy, and Silent Gliss. • Plaster is feathered over flanges for seamless appearance after painting • Tracks can be bent for curved applications. 	
Product ref	RT1F	Reese track with skim coat flanges
	RT1E	Bendable Reese track with no flanges
	LMB1F	Motor Box w flanges for system from Lutron
	LRB1F	Return Box w flanges for system from Lutron
	SMB1F	Motor Box w flanges for system from Somfy
	SRB1F	Return Box w flanges for system from Somfy
	SGMB1F	Motor Box w flanges for system from Silent Gliss
	SGRB1F	Return Box w flanges for system from Silent Gliss
Material	<ul style="list-style-type: none"> • Tracks in anodized aluminium, EN 6060 T66 • End sets in POM polymer 	
Finish	<ul style="list-style-type: none"> • Tracks are powder coated white RAL9003 • End sets are in matching white color in POM polymer 	
Installation	<ul style="list-style-type: none"> • Screws through skim coat flanges or countersink screws through track • The finished plaster level should be flush with chamfered edge. 	